

Easy Wood Plans

NOTICE

The purchaser agrees when purchasing this plan (the "Plan") that they will use the Plan only for the right to build or construct the object or project set out in the Plan (the "Project") for his/her/its personal use only and not for any commercial use, the Plan in whole or in part by any means whatsoever is strictly prohibited. 3) Blueprints For The Handyman should not be liable for any willful misuse or negligent use of this plan, the Project or any tools used to construct the Project, or any loss or damage resulting therefrom.*

#78, 2316-27 Ave N.E.
Calgary, Alberta
Canada, T2E 7A7

Directions

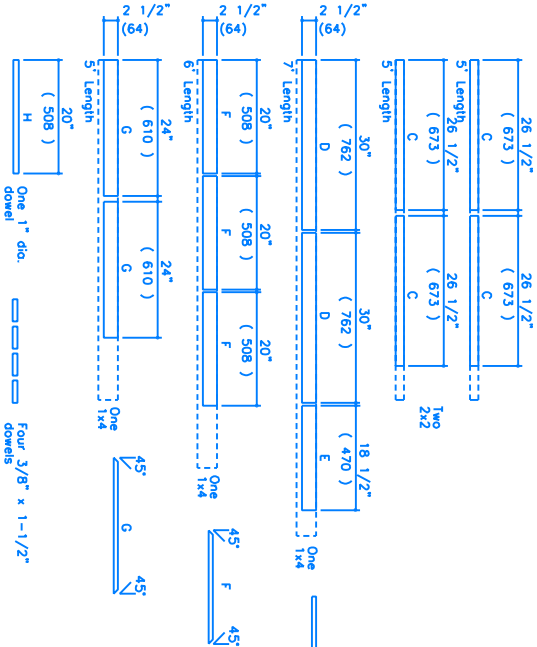
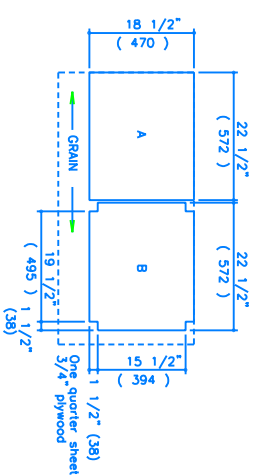
- 1) Lay out your material as outlined in the suggested materials layout (Fig 1). Draw out all parts exactly as illustrated, including the letter designations, in pencil. Ensure to leave a small space between cut lines to allow for the width of the saw. Before cutting, double check all measurements to ensure that they are correct. Always cut on the waste side of the line when cutting. Cross cutting from top splining edge to the waste side splining line when cutting. Use a hand saw. Cut one end of each piece D to a 45 degree angle with a hand saw. Cut one end of each piece D to a 45 degree angle with 45 degree corners each end, the measurement for each is given to the longest edge.
- 2) Lay out piece D as shown (Fig 2). Make a center line through D by measuring down 1 1/4" from top edge of D. Measure in 1 1/4" and 6" from end of D to give your center points. With a compass set at 1 1/4" draw a 2 1/2" circle around each center point. Measure from outside edges 1/2" and draw two lines. Cut out the shape with a jig saw for the dowel handle. Drill a 1" diameter hole on the 1 1/4" center mark for the dowel handle. Repeat for other D.
- 3) Layout pieces C (Fig 3). Draw your lines around all four sides with a pencil. Mark the top of pieces C so that they do not get put on upside down accidentally. Drill the center of the tops of pieces C 1" deep to accept the dowels, using dowel center markers. Mark and drill holes in the underside of A, 1 1/2" deep. Sand ends of each dowel to create a taper to facilitate easier insertion. Apply glue to dowels and assemble pieces C and A. Place B in position and turn assembly on its side. Pre-drill a hole through each leg into B (Fig 5) with a 1/16" bit. Nail through C into B with one 2" finish nail each corner. Using pipe clamps, lightly clamp A and Cs together. Make sure the assembly is square before you leave it to let the glue set for one hour.

OVER



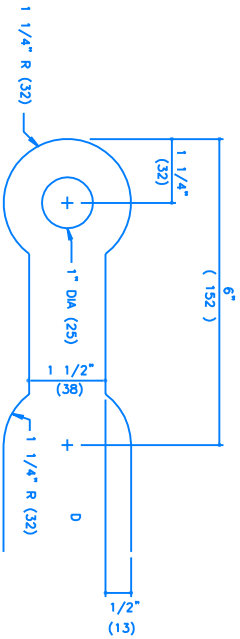
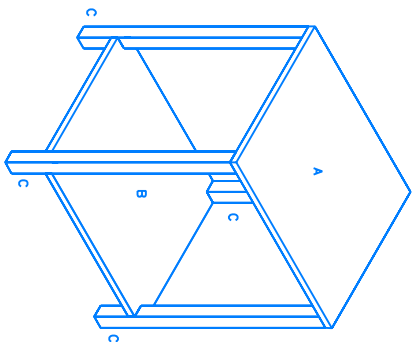
**DRILL DEPTH GAUGE
ILLUSTRATION 1**

Make a depth gauge for your drill — by drilling through a 3/4" x 3/4" piece of wood lengthwise. Cut wood to give desired depth of drill and place over drill bit.



**MATERIAL LAYOUT
FIGURE 1**

FIGURE 4



**HANDLE DETAIL
FIGURE 2**

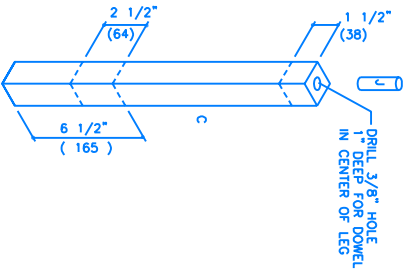
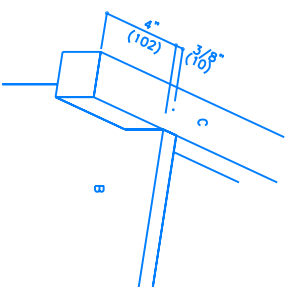


FIGURE 5



MATERIALS LIST

Carpenter's glue
Sandpaper
Wood filler
Stain or paint
Approx. Twenty 1 1/2" #8 flothead screws
Approx. Eight #8 flothead screws

MATERIALS LIST

Two 5' 2x2 (1 1/2"x1 1/2")
One 7' 1x4 (3/4"x3 1/2")
One 6' 1x4 (3/4"x3 1/2")
One 5' 1x4 (3/4"x3 1/2")
20" of 1" dowel
8" of 3/8" dowel
Four 2 1/2" casters, complete
One quarter sheet 3/4" plywood

TOOLS

Pencil
Compass
Hand saw
Drill
1/16" bit

TOOLS

1" bit
Hammer
Measuring tape
Nail set
Miter box
Screw driver

TOOLS

Dowel marker
Pipe clamps
Square
Putty knife
1/4" bit
1/8" bit

